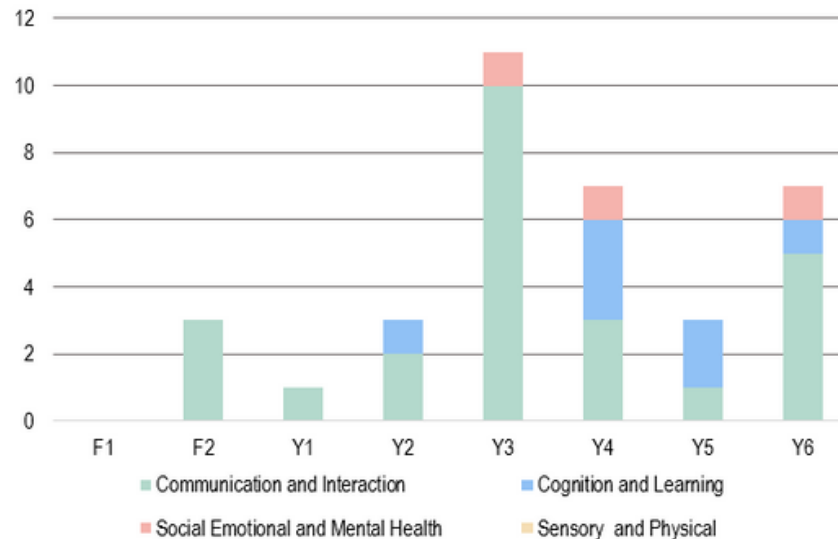


SEND Provision at Anston Hillcrest Primary School



Our Values

Our SEND Profile



At Anston Hillcrest Primary School, we celebrate every child for who they are and strive to prepare them for all they can achieve.

We want every child to 'Make a Difference.'

We are committed to providing an inclusive and nurturing environment where all children, including those with special educational needs and disabilities (SEND), can flourish. Our goal is to remove barriers to learning, ensuring every child with SEND accesses a meaningful curriculum tailored to their individual needs.

We offer a wide range of enriching opportunities designed to build essential social and emotional skills, helping children thrive academically and socially. We are dedicated to building resilience and empowering our children with the confidence to navigate life's challenges.

Speech, Language and Communication Integrated Resource

Our integrated resource for Speech, Language and Communication needs provides bespoke educational provision for children who have an EHCP and have been identified through the Local Authority speech and language graduated response pathway.

Our resource is for children who have communication and interaction as their primary need; intensive speech therapy targets form the basis of their learning, running alongside the National Curriculum offer.

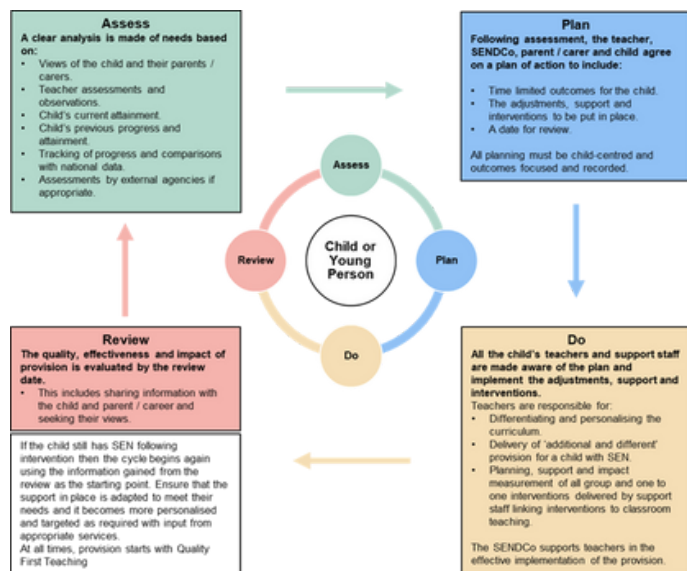
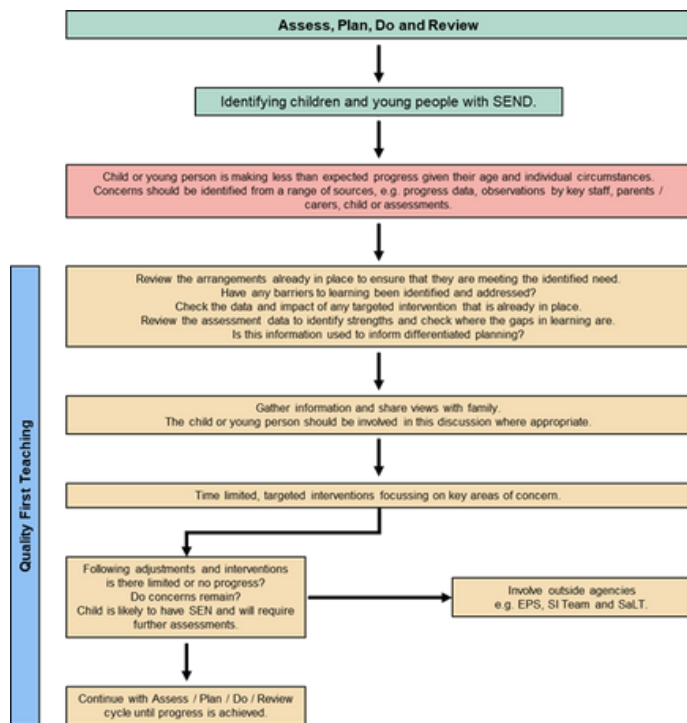
Working within our resource are NHS speech therapists as well as a class teacher and experienced support staff.

Anston Hillcrest Primary School has 14.6% of children with SEND (compared to 18% national average).

We have 6.7% children with EHCPs, including children who are currently attending our Speech and Language Integrated Resource (compared to 4.3% national average). The school's catchment is socio-economically diverse with deprivation indicators for health, crime and employment all in the lowest 50% nationally.

'Make a Difference'

Anston Hillcrest Primary School is a unique, child-centred, distinctive and inclusive school community, where we work together to empower our children by providing them with a rich, ambitious curriculum and memorable opportunities that enhance their learning and early life experiences. We endeavour to offer an environment that is warm and welcoming, a place where learning is at the heart of all we do. We deliver excellence in education and build aspiration for all.



Implementation: School Steps to Success

Provision	Communication and Interaction	Cognition and Learning	Social, Emotional and Mental Health	Sensory and Physical
Universal	<ul style="list-style-type: none"> Quality first teaching Meeting with parents One page profile Communication in print Clicker Interventions Zones of regulation Visual aids 	<ul style="list-style-type: none"> Quality first teaching Meeting with parents One page profile Communication in print Interventions and small group work Zones of regulation 	<ul style="list-style-type: none"> Quality first teaching Meeting with parents One page profile Communication in print Clicker Interventions Zones of regulation Check ins with key staff Emotion coaching 	<ul style="list-style-type: none"> Quality first teaching Meeting with parents One page profile Communication in print Clicker Sensory circuits Zones of regulation Sensory breaks
Targeted	<ul style="list-style-type: none"> As above and also: SEN support plan Regular SEN meetings with parents SALT programmes Teacher-devised specific interventions Specific support for language and communication difficulties Early help if applicable 	<ul style="list-style-type: none"> As above and also: SEN support plan Regular SEN meetings with parents Teacher-devised specific interventions Published support programmes Early help if applicable 	<ul style="list-style-type: none"> As above and also: SEN support plan Regular SEN meetings with parents Teacher-devised specific interventions Published support programmes e.g., Lego Therapy, Anger Gremlins, Emotional Scales Early help if applicable 	<ul style="list-style-type: none"> As above and also: SEN support plan Regular SEN meetings with parents Teacher-devised specific interventions OT devised programmes Early help if applicable
Specialist	<ul style="list-style-type: none"> As above and also: Fusion learning support service Autism SALT support EPS 	<ul style="list-style-type: none"> As above and also: Fusion learning support service EPS 	<ul style="list-style-type: none"> As above and also: Behaviour support e.g. Aspire Outreach EPS Bereavement support 	<ul style="list-style-type: none"> As above and also: Occupational Therapy Hearing and Visual impairment team

As a result, children at Anston Hillcrest Primary School:

- Feel happy, safe and respected.
- Behave well.
- Celebrate diversity and difference.
- Demonstrate high levels of engagement in activities, developing their speaking, listening and social skills.
- Have access to supportive and trained staff who ensure learning is appropriate for the children's individual needs.
- Make good progress through their educational journey as a result of quality first teaching, the use of effective resources and bespoke small group interventions.
- Develop good independence and life skills.
- Make secure transitions

SEND CPD for staff at Anston Hillcrest Primary School:

- Team Teach
- Bonding Through Play
- Regulate, Restore and Repair
- De-Escalation
- Relational Practice
- Emotion Coaching
- Positive Behaviour Management
- Sensory Circuits
- Attention Autism

